



## Oban Town Keelboat Regatta 2021

### Supplementary Sailing Instructions

**Insurance** All boats taking part shall have valid insurance cover including racing use against third party liability for an amount of at least £2,000,000.

#### STARTING TIMES, TIME LIMITS & TIDES

		Time	Signal	Time Limit	Tide Height and Time (GMT)
Saturday 5th June 2021					2.9m @ 1551
Briefing at Clubhouse					
Starts	Race 1	Fast Handicap Keel Boats	1230	Flag L	1600
	Race 1	Slow Handicap Keelboats	1235	Pennant 2	1600
	Race 1	Restricted Sail Keelboats	1240	Pennant 3	1600
Sunday 6th June 2021					1.5m @ 1030
	Race 2	Fast Handicap Keel Boats	1000	Pennant 1	1200
	Race 2	Slow Handicap Keelboats	1005	Pennant 2	1200
	Race 2	Restricted Sail Keelboats	1010	Pennant 3	1200
	Race 3	Fast Handicap Keel Boats	1330	Pennant 1	1600
	Race 3	Slow Handicap Keelboats	1335	Pennant 2	1600
	Race 3	Restricted Sail Keelboats	1340	Pennant 3	1600

**Start/Finish Line** Between the white flagpole at the Clubhouse and the nearer tangent of Mark S as boats approach on their normal course.

**Courses** Courses will be set by the Race Officer from the Marks List on the attached map, and shall be displayed on the course board in the Clubhouse window.

**Recalls** RRS29.2 shall not apply. Individual recalls will not be given. If a boat crosses the Starting Line prematurely an extra sound signal shall be made and the Class Warning Flag left at dip until all premature starters have returned to the proper side of the line, or until two minutes after the Starting Signal.

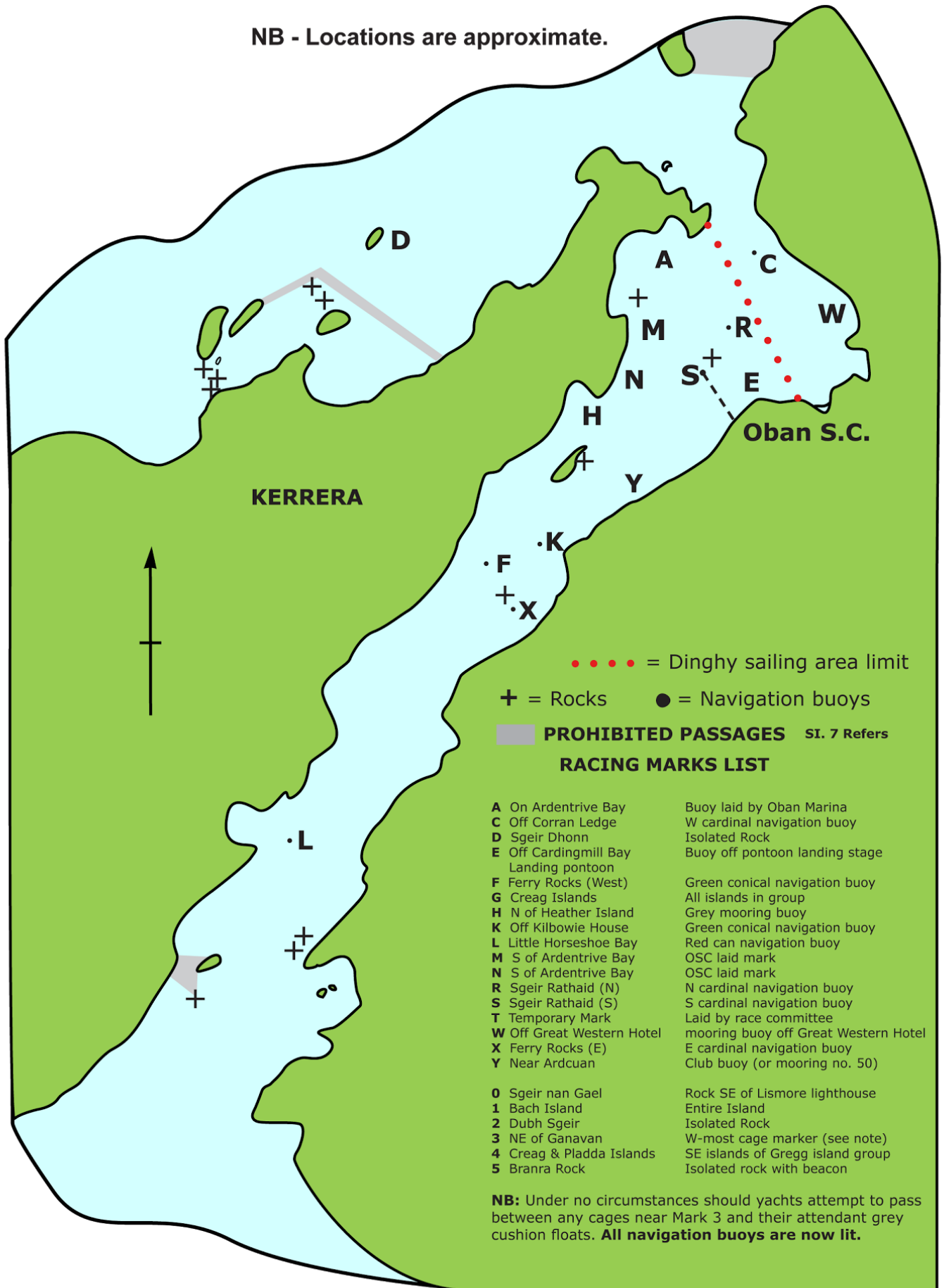
**Shortening Course** Flag S accompanied by two sound signals and the Class Flag if appropriate, indicates that the course shall be shortened to either (a) the number of laps completed by the leading boat when it next crosses the finishing line, or (b) a line between a mark and a boat displaying a blue flag.

**Protests** Protests shall be heard by a committee of at least three members of OSC and shall be heard as soon as mutually convenient following the incident. Protests shall be made in accordance with RRS 61. The time limit for lodging a protest shall be one hour after the last boat in the race finishes. Protests shall be lodged with the Race Officer at the Race Office. There shall be no protest fee.

Due to the current Coronavirus Restrictions there will be no prizegiving after the racing on Sunday, this will instead be moved to be included at the Prizegiving and Dinner Dance at the end of the year.

# THE LOCATION OF RACING MARKS WITHIN THE SOUND OF KERRERA

NB - Locations are approximate.



..... = Dinghy sailing area limit

+ = Rocks      ● = Navigation buoys

PROHIBITED PASSAGES SI. 7 Refers

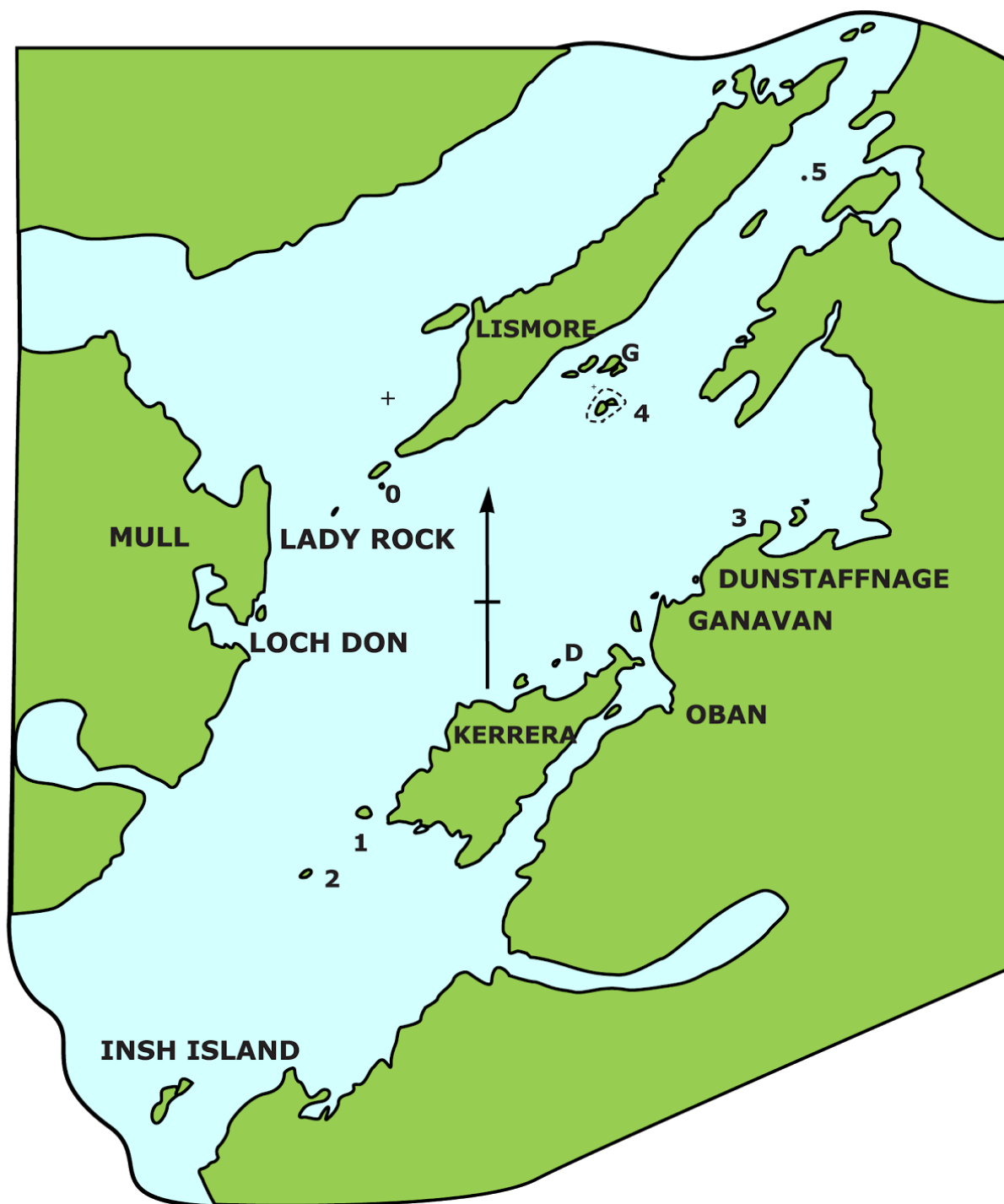
## RACING MARKS LIST

- |   |                         |                                      |
|---|-------------------------|--------------------------------------|
| A | On Ardentrive Bay       | Buoy laid by Oban Marina             |
| C | Off Corran Ledge        | W cardinal navigation buoy           |
| D | Sgeir Dhonn             | Isolated Rock                        |
| E | Off Cardingmill Bay     | Buoy off pontoon landing stage       |
| F | Ferry Rocks (West)      | Green conical navigation buoy        |
| G | Creag Islands           | All islands in group                 |
| H | N of Heather Island     | Grey mooring buoy                    |
| K | Off Kilbowie House      | Green conical navigation buoy        |
| L | Little Horseshoe Bay    | Red can navigation buoy              |
| M | S of Ardentrive Bay     | OSC laid mark                        |
| N | S of Ardentrive Bay     | OSC laid mark                        |
| R | Sgeir Rathaid (N)       | N cardinal navigation buoy           |
| S | Sgeir Rathaid (S)       | S cardinal navigation buoy           |
| T | Temporary Mark          | Laid by race committee               |
| W | Off Great Western Hotel | mooring buoy off Great Western Hotel |
| X | Ferry Rocks (E)         | E cardinal navigation buoy           |
| Y | Near Ardcuan            | Club buoy (or mooring no. 50)        |
| 0 | Sgeir nan Gael          | Rock SE of Lismore lighthouse        |
| 1 | Bach Island             | Entire Island                        |
| 2 | Dubh Sgeir              | Isolated Rock                        |
| 3 | NE of Ganavan           | W-most cage marker (see note)        |
| 4 | Creag & Pladda Islands  | SE islands of Gregg island group     |
| 5 | Branra Rock             | Isolated rock with beacon            |

**NB:** Under no circumstances should yachts attempt to pass between any cages near Mark 3 and their attendant grey cushion floats. **All navigation buoys are now lit.**

# THE LOCATION OF RACING MARKS OUTWITH THE SOUND OF KERRERA

NB - Locations are approximate.



**Note:** Unless individually specified as a mark of the course, navigation buoys may be left on either hand. a) at the owners' own risk, and b) in accordance with Sailing Instruction 7 - Prohibitions.